

## 迷你气缸配件

Mini Cylinder Accessories

M-FA / M-FA-A 法兰板  
Flange

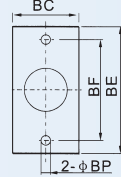
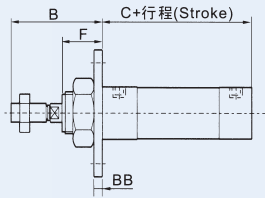


M-FA

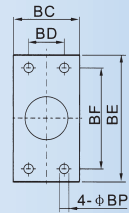
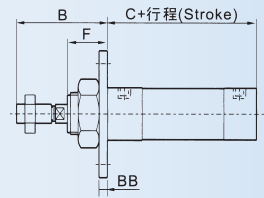


M-FA-A

Φ16~Φ25

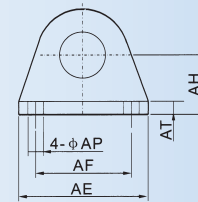
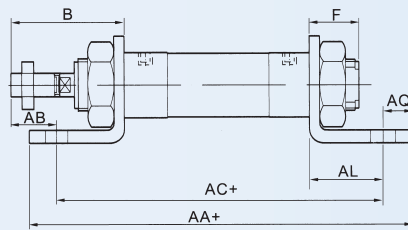
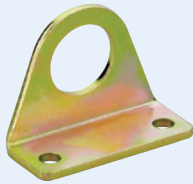


Φ32~Φ40



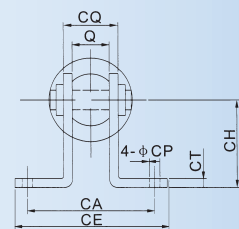
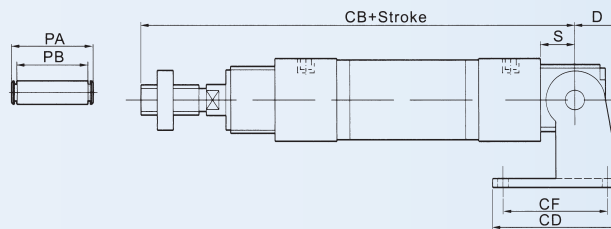
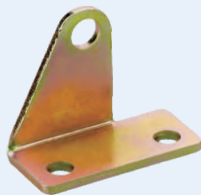
内径 Bore	B	C						BB	BC	BD	BE	BF	BP	F
		MA 系列 Series	MAL 系列 Series	MSA 系列Series		MSAL 系列Series								
				0-50	51-100	0-50	51-100							
16	38	60	-	60	85	-	-	3	26	-	52	40	5.5	16
20	40	76	70	76	101	70	95	4	38	-	64	50	6.5	12
25	44	76	70	76	101	70	95	4	38	-	64	50	6.5	14
32	44	76	70	76	101	70	95	4	47	33	72	58	6.5	14
40	46	76	92	76	101	92	117	4	50	36	84	70	6.5	14

M-LB 支架 Bracket



内径 Bore	B	F	AA				AB	AC				AE	AF	AL	AQ	AP	AT	AH				
			MA 系列 Series	MAL 系列 Series	MSA 系列Series			MSAL 系列Series														
					0-50	51-100		0-50	51-100													
16	38	16	98	-	98	123	-	-	25	86	-	86	111	-	-	44	32	13	6	5.5	3	20
20	40	12	122	116	122	147	116	141	25	106	100	106	131	100	125	54	40	15	8	6.5	3	25
25	44	14	122	116	122	147	116	141	29	106	100	106	131	100	125	54	40	15	8	6.5	3	25
32	44	14	142	136	142	167	136	161	19	126	120	126	151	120	145	59	45	25	8	6.5	4	32
40	46	14	142	158	142	167	158	183	21	126	142	126	151	142	167	64	60	25	8	6.5	4.5	36

M-SDB 支架 Bracket



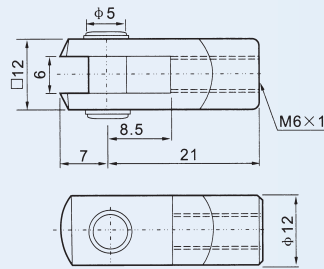
内径 Bore	D	S	Q	CA	CB				CD	CE	CF	CH	CT	CP	CQ	PA	PB		
					MA 系列 Series	MAL 系列 Series	MSA 系列Series												
							0-50	51-100											
16	16	9	12	-	107	-	107	132	-	-	23	-	12	20	2.3	5.5	16.5	21	17
20	21	12	16	51	128	122	128	153	122	147	48	67	32	32	3	6.5	22	27	22.5
25	21	12	16	51	132	126	132	157	126	151	48	67	32	32	3	6.5	22	27	22.5
32	27	15	16	51	135	129	135	160	129	154	52	67	36	36	4	6.5	24	30	24.5
40	27	15	20	55	137	153	137	162	153	178	56	71	40	40	4	6.5	28	34	28.5

## M-Y 型 接头 Joint

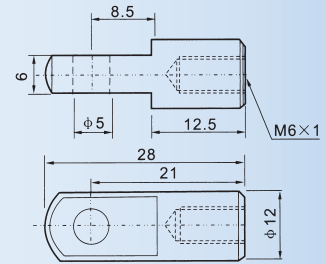


M-Y+销子(Pin)

M-Y+卡扣(Clip)



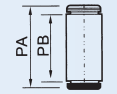
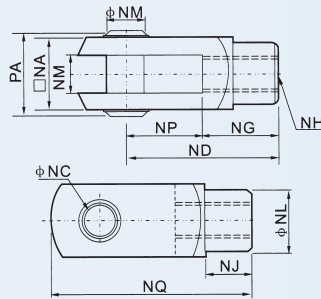
$\phi 16$



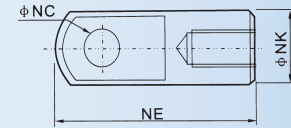
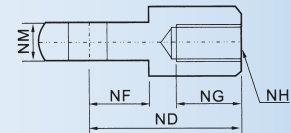
## M-I 型 接头 Joint



M-I 型接头(Joint)

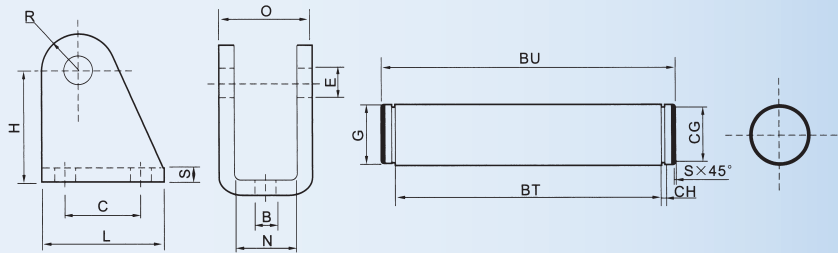


$\phi 20 \sim \phi 40$



内径 Bore	NA	NC	ND	NE	NF	NG	NH	NJ	NK	NL	NM	NN	NP	NQ	PA	PB
20	16	8	30	40	11	15	M8×1.25	10	16	14	8	8	15	40	21	16.5
25	19	10	40	52	15	20	M10×1.25	12	20	18	10	10	20	52	25	19.5
32	19	10	40	52	15	20	M10×1.25	12	20	18	10	10	20	52	25	19.5
40	25.4	10	45	57	15	25	M12×1.25	15	24	23	14	10	20	57	31	26

## M-U 型 支架 Bracket



内径 Bore	B	E	C	H	L	N	O	R	S	G	BT	CG	CH	BU	S
8/10	4.5	4	12.5	24	20	8.1	13	5	2.5	4	14	3.7	0.5	17	0.2
12/16	5.5	6	15	27	25	13	18	7	3	6	19	5.6	0.8	24	0.4
20/25	6.6	8	20	29.5	32	16.1	24	10	4	8	25.2	7.5	0.9	29.5	0.5